



## **INSTALLATION INSTRUCTIONS SPC LUXURY VINYL PLANK & TILES CLICK**

We provide these guidelines to ensure a successful installation and support you in meeting best practices and adhering to industry standards. It's important for the installation contractor or fitter to evaluate site conditions, subfloor quality, and the desired finish prior to beginning the installation.

These instructions are intended to align with the British Standard, promoting safe and accurate installation while enhancing the overall performance of the flooring. Thank you for your attention to detail and dedication to delivering exceptional results!

### **General Overview**

Luxury SPC Planks & Luxury SPC Tile Click is a completely waterproof floating floor that boasts impressive acoustic and thermal qualities, constructed from lightweight and rigid core materials. Careful installation practices are encouraged to ensure a proper fit. The product is suitable for both commercial and residential spaces; however, it is not intended for outdoor installation.

Before installing, ensure that any permanent fixtures are in place while allowing room for expansion and contraction (as detailed below). Spaces left for expansion around moisture-prone areas should be filled with a flexible acrylic or neutral-cure silicone sealant. Typically, a separate underlayment is not necessary; please consult your supplier for confirmation.

### **Acclimatization of Material**

For commercial installations, it is essential to carefully open the flooring packaging at both ends at least 12 hours prior to installation. Allow the flooring to acclimate in the room where the installation will occur. The room temperature must be maintained between 64-81°F (18-27°C) during this period.

For residential installations, acclimatization is not necessary if the product temperature is already within the range of 64-81°F (18-27°C).

## **Subfloors**

As with all types of flooring, it is essential to start with a clean and level subfloor that is free from lumps, bumps, hollows, and other imperfections. Any protrusions should be planed or sanded down, and all hollows and gaps should be filled with a water-resistant levelling compound.

The moisture level must be measured and should not exceed 75% relative humidity. Additionally, any isolated high points or ridges should be removed to prevent damage to the flooring material.

## **INSTALLATION**

Measure the area to be installed and decide on the direction of installation. The width of the tile on the last row must be no less than approximately 50 mm. If this is the case, adjust the width of the first row. Install the floor without adhesive: Luxury Vinyl SPC Click shall always be installed as a floating construction. Allow an expansion gap around the whole outer border, i.e., also for pipes, stairs, pillars, door frames, and thresholds. The expansion gap and maximum installation area are:

- Maximum area: 225 sqm.
- Maximum length or width: 15m.
- Expansion gap: 5-7mm with length/width of 0-10m and 7-8mm with length/width 10-15m.

In rooms with quadratic areas (L, F, T, U shapes), separate the areas using an expansion joint, especially by door openings. If you have any questions, please contact your dealer for further information. You can use the floor immediately after installation. The strips must be secured to the wall, never to the floor.

## **Tools**

For a successful installation, the following tools will be necessary pencil, utility knife, ruler/straight edge, carpenter's square, saw, hand roller, pull bar, laminate guillotine to cut 45° angle, hammer and rubber mallet are recommended.

## **Important Information**

Always check that all packs have the same production number before installation (see the production number on each pack). We recommend that the tiles be installed in the same direction, in accordance with the mark/arrow on the reverse side of the tile.

Even though all material is carefully inspected before delivery, faults can occur. Any deviations (damaged or incorrect floor tiles) must be reported immediately to the manufacturer and must not be installed; these tiles must be set aside before installation. If you have any doubts before installation, always consult us.

Office chairs that are to be used on SPC Luxury Tiles Click must be fitted with soft-type W castors in accordance with DIN 68131. Also, note the firmness requirement for the substrate. Rubber wheels, rubber pads, printing ink from plastics, etc., can discolour the floor and leave permanent marks over time. Always use pads on furniture to protect the floor against surface damage and scratches.

If construction activity is to continue, place protective covering on newly installed floors. Do not tape the protective cover directly to the floor, as the adhesive on the tape can have a negative effect on the floor, and some types of adhesives are very difficult to remove.

Adhesives are not recommended in the installation of this product.

Please feel free to contact us for additional information.

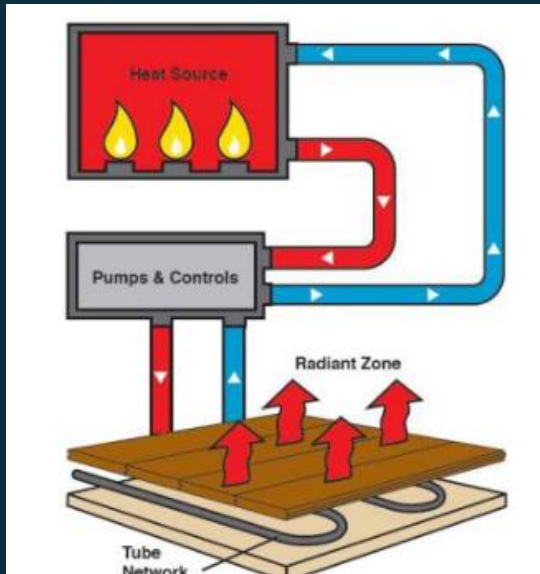
---

## **HEATING SYSTEMS - HYDRONIC**

All radiant heat systems must have failsafe capability to ensure surface temperatures do not exceed 27°C. The heating system tubes must be 38mm below the surface layer of the concrete slab/thermal mass. Two to three weeks prior to the installation, the thermostat must be set at 21°C, then at 30°C for 3 days. The home should be aired out briefly every day to allow the excess humidity from the thermal mass to exhaust out of the structure.

### **CLASSIFICATIONS OF HYDRONIC SYSTEM:**

- Encased in Cement/Gypcrete.
- Encased in Aluminium Hangers between flooring joists.
- Involves use of Aluminium Transfer sheets between subfloor and a wood deck on top of sleepers.



### **SURFACE CHANNELLED RADIANT HEAT SUBFLOOR:**

Surface-channelled radiant boards are not acceptable for use under Luxury SPC Vinyl flooring. A minimum of 19mm must be maintained between the floor and the water tubing. This is not possible with these types of systems. This applies to systems with or without an aluminium transfer sheet. Subfloor level tolerances listed previously also apply to radiant heated subfloors.

### **HYDRONIC RADIANT HEAT APPROVED PRODUCTS**

#### **Luxury SPC Plank & Tile + IXPE**

**CAUTION:** The surface temperature of the vinyl floor should never be set to exceed 30°C. as a function of the heating system.

Temperature sensors must be integrated into the system as a failsafe to prevent excessive heat and damage to the Luxury SPC Vinyl Flooring + IXPE.

**NOTE:** Area rugs and closed bottom furniture placed over radiant heat system will create heat retention in the floor.

This may result in that area exceeding optimum temperature and causing slightly larger gaps and minor distortion in the floor under closed bottom furniture (bookcases, entertainment units, area rugs, etc.) Hydronic systems are difficult to regulate in that regard.

### **PASSIVE RADIANT HEAT SYSTEMS:**

Passive radiant heat systems are not suitable for use with Luxury SPC Vinyl Flooring + IXPE

Any approved radiant system must be combined with the ability to move the

air in the room for proper heat distribution and to prevent excessive heat at floor level. Humidity controls must be in place to maintain relative humidity within a 20 to 60% RH range.

## **INSTALLATION METHODS-HYDRONIC**

Floating Installation: Luxury SPC Vinyl Flooring + IXPE, does not require additional pad, and additional pads must not be used.

Glue Down Installation: Not permitted.

Thermal mass must be concrete product and rated at a compressive strength of 2500 psi or greater. Thermal mass with less than 2500 psi compressive strength.

Tubing must be a minimum of 32mm below the surface of the concrete thermal mass.

## **RADIANT HEAT IN LIGHTWEIGHT CONCRETE – DRYING THERMAL MASS PRIOR TO INSTALL**

Two to three weeks prior to the arrival of the vinyl floor and after the completion of all wet work at the job site, the radiant heat system should be set to a temperature of 21°C for three weeks and then at 30°C for 2-3 days. During this time, the structure should be well-ventilated to prevent moisture buildup (the increased heat is driving the moisture out of the concrete thermal mass during this time). If this is not possible due to weather or outdoor climate conditions, dehumidifiers should be used to keep moisture from building up in the structure.

NOTE: Prior to installation, the lightweight concrete moisture content must not exceed 2% as measured with a Tramax Moisture Meter.

## **HYDRONIC RADIANT HEAT / WOOD SUBSTRUCTURE AND ALUMINIUM THERMAL TRANSFER SHEET/HANGERS – PRIOR TO INSTALL**

Two weeks prior to the arrival of vinyl flooring at the job site, the radiant heat system should be gradually brought up to 21°C. Moisture levels allowable in the wood subfloor must not exceed 12%. Once systems have reached optimum conditions, Luxury SPC Vinyl flooring should be brought to the job site, not before.

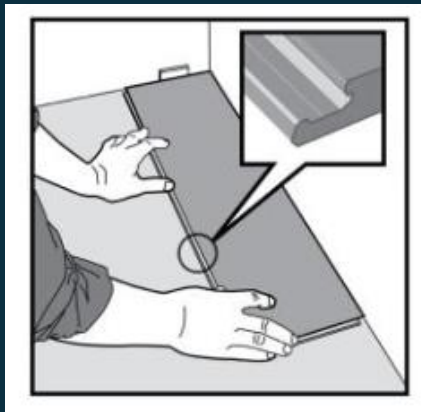
**IT IS NOT RECOMMENDED TO USE LUXURY SPC VINYL PLANK & TILE WITH ELECTRIC HEATING SYSTEMS.**

---

## INSTALLATION OF SPC LUXURY CLICK

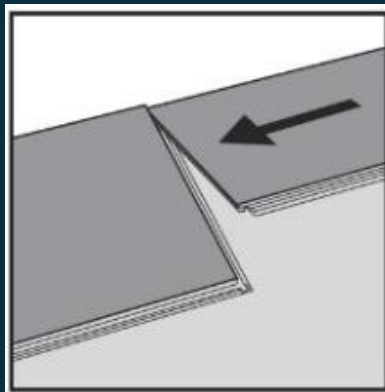
1. First tile, first row.

Place the plank against the wall with a 5-10mm distance from the wall on the left. Later, after 3 rows, you can easily place the floor against the front wall at 5-10mm.



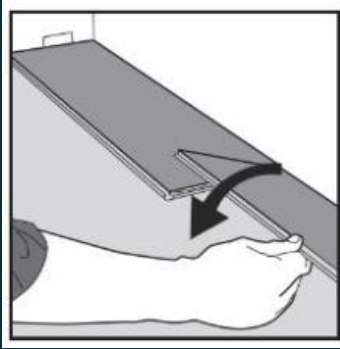
2. Second tile, first row.

Place the tile carefully and tightly against the short end of the first one.

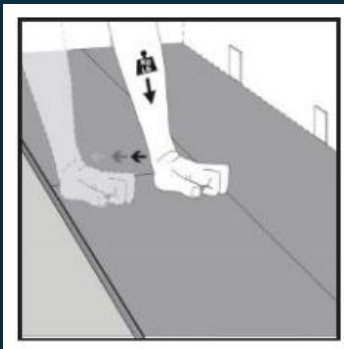


3. Fold down in one single movement.

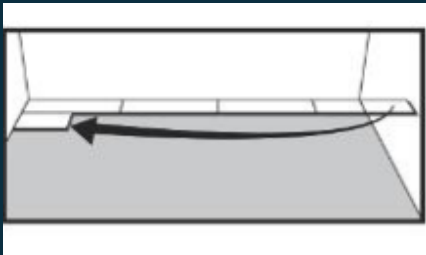
Check that the tiles are tightly against each other. Press or tap on the newly installed short end. At the end of the first row, leave a distance of at least 5-10mm to the wall.



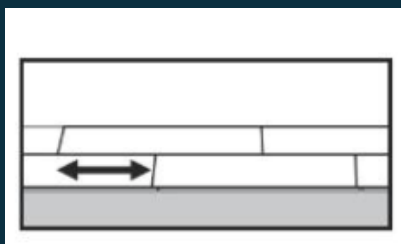
4. Press down with your hand or tap lightly with a rubber mallet on the tile you just installed.



5. Second row.  
The first and last tile must be at least 300mm. Keep a small distance from the wall.

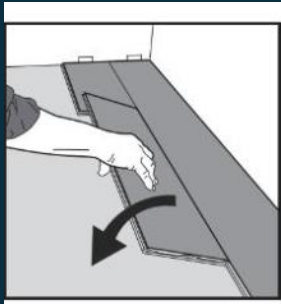


6. Distances between the short sides.  
The minimum distance between the short ends of the tiles in parallel rows may not be any less than approximately 300mm.



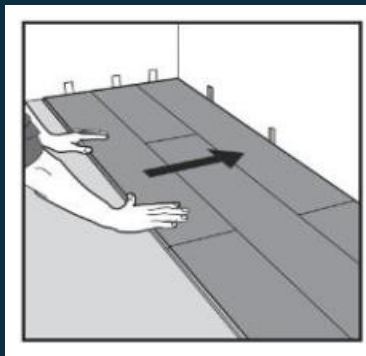
7. Second tile, second row.

Place the tile carefully and tightly against the short end of the previous tile and fold it down in one single movement. While folding down, check that the tiles are tightly against each other. Press or tap on the newly installed short end.



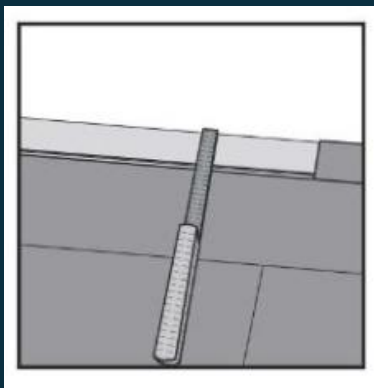
8. After 2-3 rows.

Adjust the distance to the front wall by positioning it 5-10mm.



9. Last row (and possibly the first row).

Minimum width is 50mm. Remember the distance to the wall, which should be 5-10mm. Cut/saw the tiles lengthways and glue the short ends using PVC adhesive.

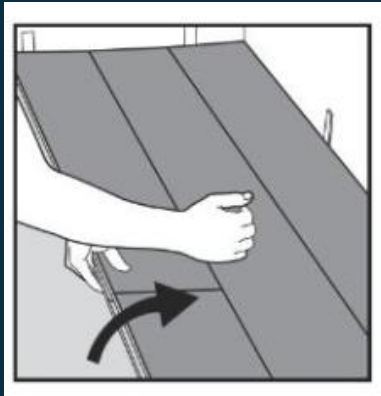




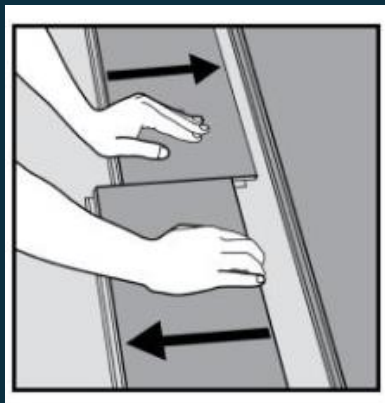
---

## DISMANTLING FLOOR TILES

1. Separate the whole row by carefully lifting and releasing it. Fold up and release the whole long side.



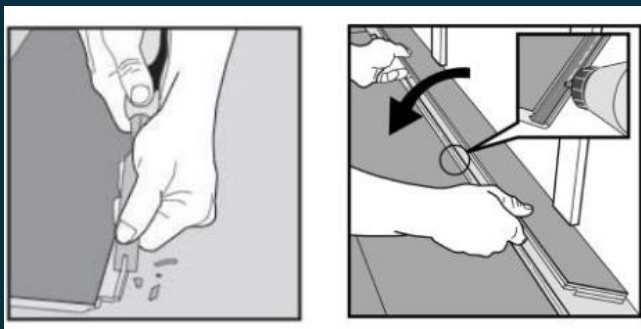
2. Dismantle the tiles by sliding them horizontally. Do not fold up the floor tiles, as this will destroy the locking elements.



---

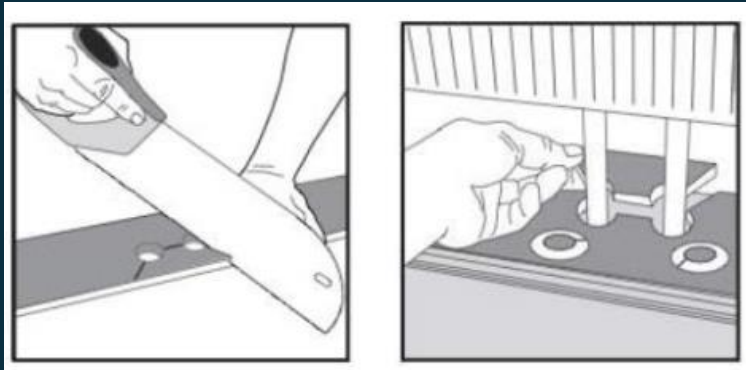
## SPECIAL INSTALLATIONS - HORIZONTAL INSTALLATION

Cut off the locking element using a chisel, apply PVC adhesive to the adjusted strip, and press the tiles together horizontally. If necessary, place spacers between the final plank and the wall while the adhesive hardens.



## SPECIAL INSTALLATIONS - RADIATOR PIPES

For installation around radiators, drill holes 5-10mm bigger than the diameter of the pipes. Glue the block behind the pipes.



---

### Finishing

Remove all spacers and cover any expansion gaps with quarter round or baseboards, making sure not to nail through the floor, only into the walls. Fill expansions around any wet areas (sinks, tubs, etc.) with a flexible acrylic sealant or a flexible silicone sealant (neutral cure). Install coordinating T-mouldings as necessary at transitions to other flooring and in large areas over 50 ft in each direction.

---

### Taking Care of Your Floor

- **Moisture:** Ensure that cleaning products are of a non-staining variety. Regularly sweep the floor to remove loose dirt or grit, as these can cause fine scratches.
- For a thorough clean, a range of cleaning products is available (Clean, Remove, and Refresh). Avoid the use of regular household cleaners and bleach-based detergents, as these could make the floor slippery or cause discolouration.
- Always mop up spills as soon as possible to reduce the risk of slipping and possible staining.
- Use entrance mats to protect against grit (not rubber-backed) to prevent any discolouration of the floor.
- Avoid sliding or dragging furniture or other objects across the floor—use floor protector pads to prevent scratching.
- Use caster cups to protect against indentation from heavy furniture.

- Maintain room temperature between 64-81°F (18-27°C) for optimum performance.
- Do not subject flooring to standing water, as this will present a slip hazard.